



บริษัท ไมตี้ อีเลคทริก (ไทยแลนด์) จำกัด
MIGHTY ELECTRIC (THAILAND) CO., LTD.

31/1 หมู่ 4 ถนนเอกชัย-บางบอน

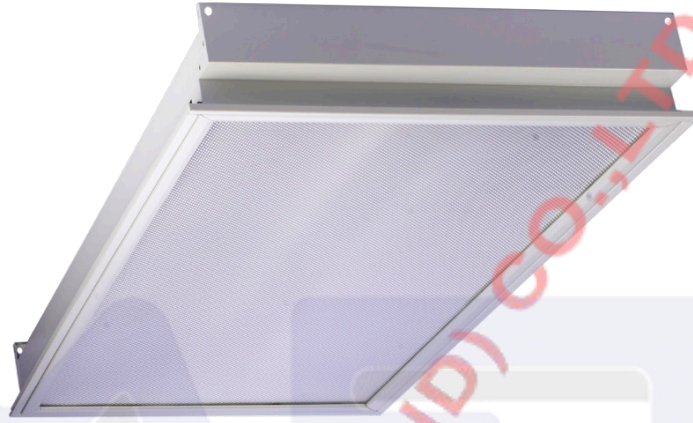
ตำบลคอกกระบือ อำเภอเมืองสมุทรสาคร จังหวัดสมุทรสาคร 74000

โทร.034-823302, 034823303, 034451500, 034451501 แฟกซ์.034-823305 www.mighty-electric.com



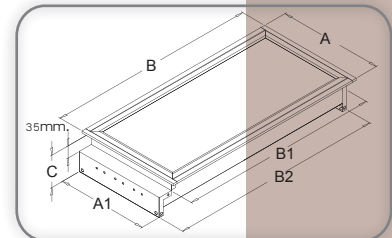
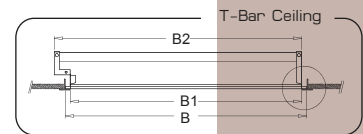
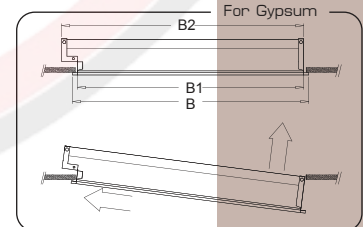
T-Bar & Gypsum Prismatic Diffused Fitting with Aluminium Reflector

MODEL : MCP346PM-AL



SPECIFICATION

- Housing :** Steel sheet thickness of 0.5-0.8 mm. And all metal parts are rust-proofed after fabrication to prevent any corrosion (zinc phosphate) and finished with high-grade epoxy polyester powder coating.
- Reflector :** 99.90% purity anodized aluminium reflector to provide total reflectance of TR 87%-95% mirror-finish, parabolic reflectors machined to provide optimum optical performance for maximum high-output-ratio.
- Diffuser :** Is made of prismatic acrylic with 2.5-3.0 mm. thickness
Option diffuser : (**)
Prismatic = PM
- Frame for diffuser :** Extrude aluminium with high-grade epoxy polyester powder coating.
- Lock type :** Spring latch locker system (inner)
- Lamp holder :** Rotary lock (G13) lamp holder certified by TIS NO.344-2549.
- Starter holder :** Rotary lock certified by TIS NO.344-2549.
- Wire :** Thw size 1.0 sqmm. 70°c-105°c certified by TIS NO.11-2553.



TIS.902-2(2)-2557



TIS.1955-2551



ISO 9001



ISO 14001

DESCRIPTION

MODEL	POWER	DIMENSION (mm.)						Note : Subject +/- 2 mm. Ceiling : Cut Out (mm.)
		A	B	C	A1	B1	B2	
MCP346PM-AL	3 x 36w. T8	600	1200	95	580	1175	1123	585 x 1185